

REGULATORS

FIRST STAGE 28XR.....	PAG.1
FIRST STAGE 25XR.....	PAG.2
FIRST STAGE R2S - XR.....	PAG.4
SECOND STAGE HR.....	PAG.5
SECOND STAGE DR.....	PAG.6
SECOND STAGE CR.....	PAG.7
SECOND STAGE VR.....	PAG.8

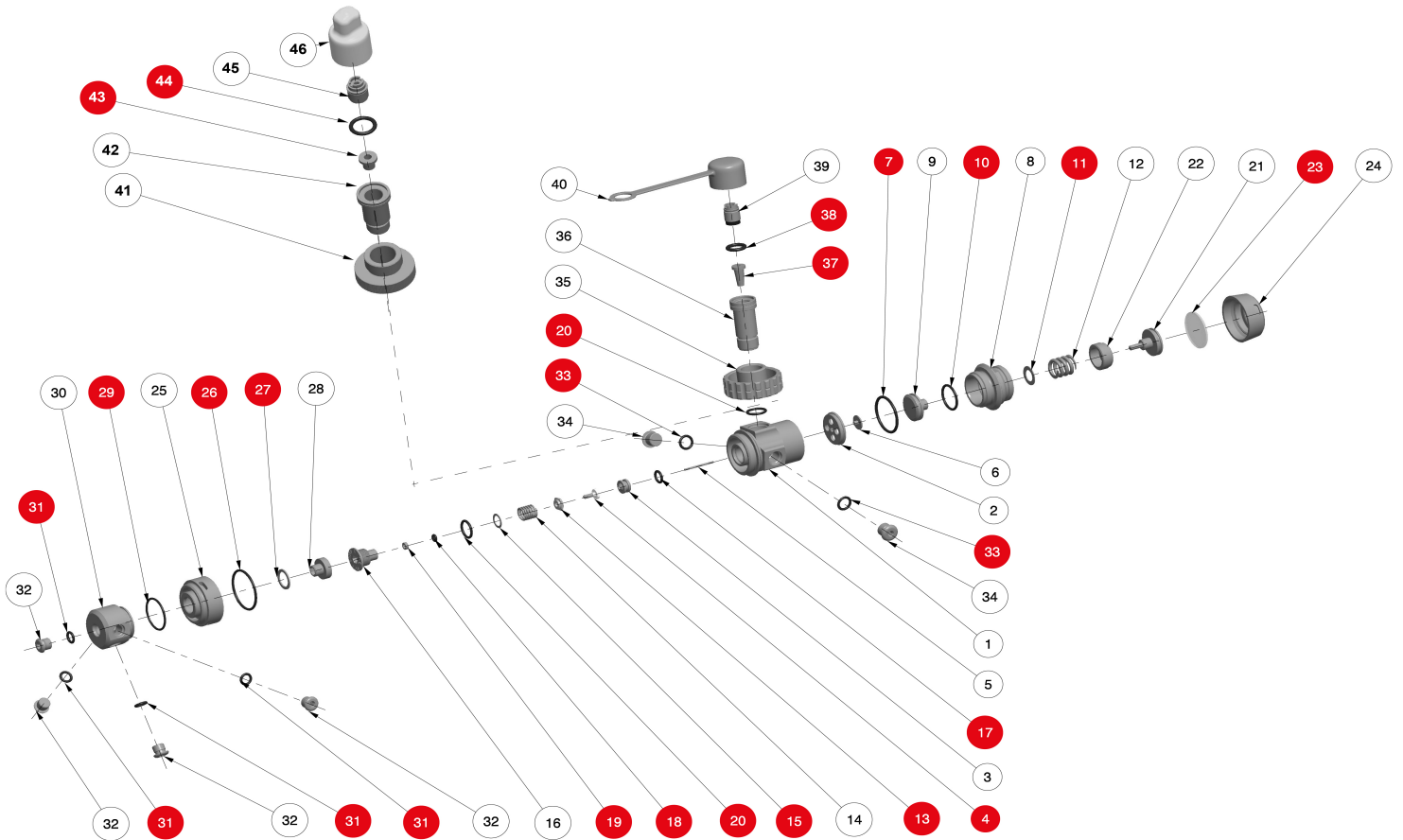


CHART NO : XRF2

FIRST STAGE 28XR

UPDATED: 12/08/2019

REF	CODE	DESCRIPTION	€
1	46201670	FIRST STAGE BODY 28XR	
2	46201676	METAL DISC	
3	46201541	HP SEAT "MR"	
4	V	POPPET TRIMAT 2K18	
5	46201303	PIN 26,5	
6	46200545**	FIRST STAGE VALVE BUTTON	
7	46201715	ORING-28x2	
8	46201698	TBP BODY 28XR	
9	46201690	LOWER PISTON	
10	46110243	Oring-2075	
11	46201725	WASHER SPRING TBP	
12	46201285	TBT SPRING	
13	V	BASE POPPET SPRING 50 N	
14	46202047	SPRING 1ST STAGE 50N	
15	46202048	HP CHAMBER WASHER	
16	46202044	HP CHAMBER 50N	
17	46110107	ORING 2031	
18	46110101	ORING 2012	
19	46110506	BACKUP RING	
20	46110211	ORING 2050	
21	46201692	UPPER PISTON	
22	46201119	REGULATING NUT	
23	46201711	DIAPHRAGM TBP	
24	46201748	RETAINING RING TBP	
25	46201749	RETAINING RING 1ST STAGE	
26	46110175	ORING 2125	
27	46201424	ROTATING TURRET WASHER	
28	46201423	INSERT	
29	46201426	ORING-25x1.5	

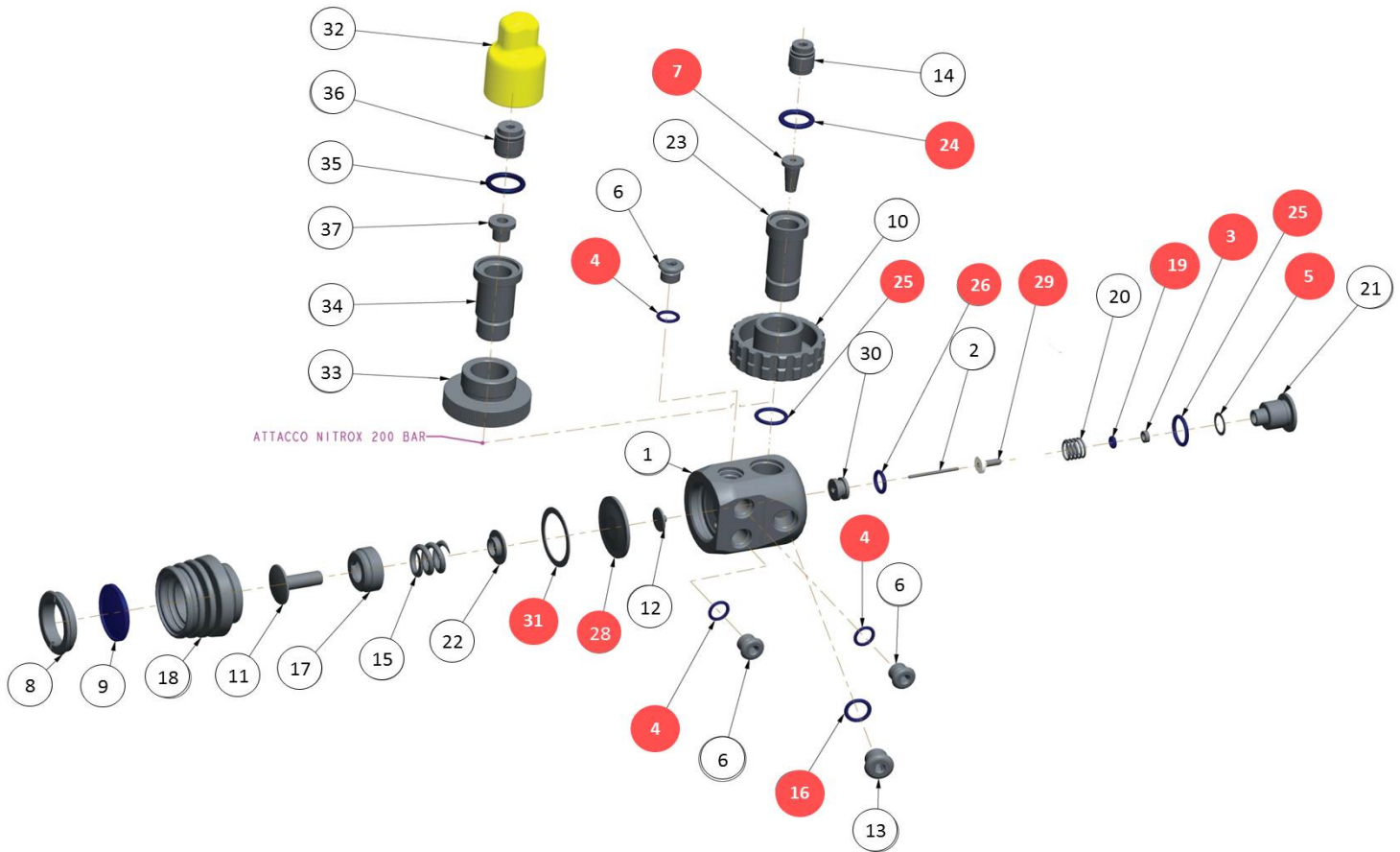
REF	CODE	DESCRIPTION	€
30	46201431	SWIVEL TURRET	
31	46110106	ORING 106	
32	46185204	LP PLUG 3/8"	
33	46110108	ORING 108	
34	46185205	HP PLUG 7/16"	
35	46201268	THREADED LOCKING RING	
36	46201102	BODY, DIN CONNECTOR 300 BAR	
37	46200560	CONICAL FILTER, DIN	
38	46110247	ORING 3043	
39	416812	AST DIN	
40	46200562	DIN CONNECTOR DUST CAP	
41	N	NITROX LOCKING RING 200 Bar (EN13949)	
42	N	BODY, NITROX CONNECTOR 200 BAR (EN13949)	
43	46186202	CONICAL FILTER, INT	
44	46110227	OR 3056	
45	46201422	AST NX + GASKET	
46	46200658	YELLOW DUST CAP, NITROX	

ASSEMBLIES

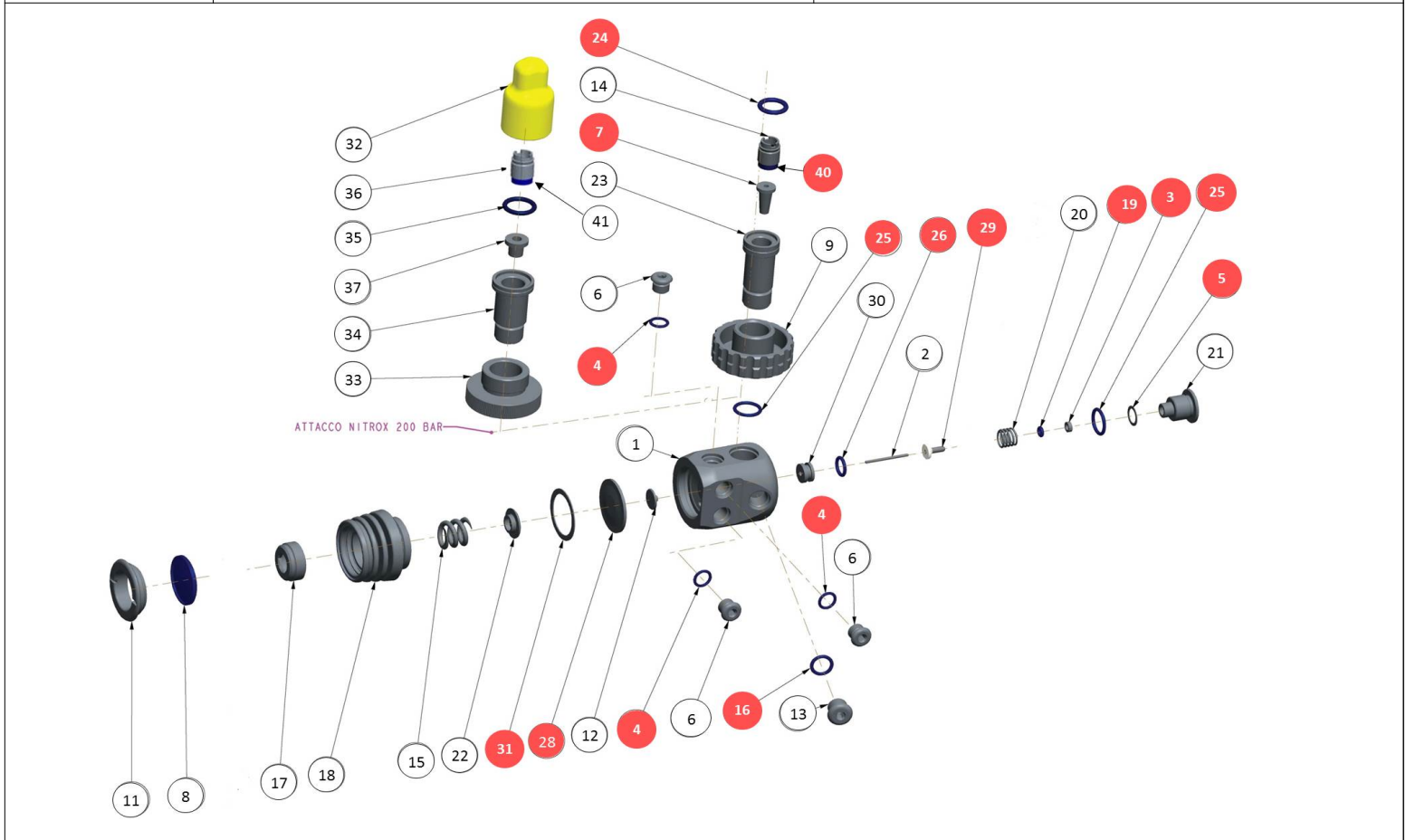
V	46201784	Poppet Trimat 50N CPL	
N	46201743	NITROX CONNECTOR 200 BAR AST (EN13949)	
---	46201783	SERVICE KIT FIRST STAGE28XR DIN/NX	
---	46200855	10 PACK BLACK MOUTHPIECES	

NOTE

Parts highlighted in red are included in the service kits 46201783
 **(6) TILL STOCK ENDS - IT WILL BE REPLACED BY 46202088



REF	CODE	DESCRIPTION	€	REF	CODE	DESCRIPTION	€
1	F	FIRST STAGE BODY SX		26	46110107	OR 2031	
1	F	FIRST STAGE BODY DX		28	46201667	DIAPHRAGM	
2	46201303	PIN 26,5		29	46201361	FIRST STAGE POPPET ACT	
3	46110506	BACKUP RING PK		30	46201541	HP SEAT "MR"	
4	46110106	OR 106		31	46200581	ANTI-FRICTION RING	
5	46201291	WASHER, HP CHAMBER		32	46200658	YELLOW DUST CAP, NITROX	
6	46185204	LP PLUG 3/8", FIRST STAGE, REGS.		33	N	NITROX LOCKING RING 200 Bar (EN13949)	
7	46200561	CONICAL FILTER, DIN		34	N	BODY, NITROX CONNECTOR 200 BAR (EN13949)	
8	C	HOCK CUP CWD DRY		35	46110227	OR 3056	
9	46200558	DIAPHRAGM, CWD KIT		36	N	O-RING SEAT NITROX (EN13949)	
10	46201030	25X THREADED LOCKING RING		37	46186202	CONICAL FILTER, INT	
11	C	CWD DRY PISTON				ASSEMBLIES	
12	46200545**	FIRST STAGE VALVE BUTTON		C	416857	KIT CWD DRY	
13	46185205	HP PLUG 7/16", FIRST STAGE		F	416400	FIRST STAGE 25X ASSEMBLY (DX - SX)	
14	46200547	O-RING SEAT, DIN		---	46201580	SERVICE KIT FIRST STAGE 52X/15X/25XR INT/DIN	
15	46201285	SPRING DIAPHRAGM FIRST STAGE				NITROX VERSION	
16	46110108	OR 108		N	46201743	NITROX CONNECTOR 200 BAR (EN13949) - NBR ORINGS	
17	46201120	REGULATING NUT, FIRST STAGE		---	46201444	SERVICE KIT NX IST 52/22 (EN13949) - NBR ORINGS	
18	C	CWD DRY BODY, 52				NOTE	
19	46110101	OR 2012		Parts highlighted in red are included in the service kits 46201355 **(12) TILL STOCK ENDS - IT WILL BE REPLACED BY 46202088			
20	46201284	SPRING, FIRST STAGE VALVE					
21	46201275	HP CHAMBER 15					
22	46200582	PLATE SPRING BASE, FIRST STAGE					
23	46201102	BODY, DIN CONNECTOR 300 BAR					
24	46110247	OR 3043					
25	46110211	OR 2050					



REF	CODE	DESCRIPTION	€	REF	CODE	DESCRIPTION	€
1	F	FIRST STAGE BODY SX		28	46201667	DIAPHRAGM	
1	F	FIRST STAGE BODY DX		29	46201575	TRIMATERIAL POPPET 2K18 CPL	
2	46201303	PIN 26,5		30	46186216	HP SEAT "MR"	
3	46110506	BACKUP RING PK		31	46200581	ANTI-FRICTION RING	
4	46110106	OR 106		32	46200658	YELLOW DUST CAP, NITROX	
5	46201291	WASHER, HP CHAMBER		33	N	NITROX LOCKING RING 200 Bar (EN13949)	
6	46185204	LP PLUG 3/8", FIRST STAGE, REGS.		34	N	BODY, NITROX CONNECTOR 200 BAR (EN13949)	
7	46200561	CONICAL FILTER, DIN		35	46110227	OR 3056	
8	46200558	DIAPHRAGM, CWD KIT		36	46201422	AST NX + GASKET	
9	46201030	25X THREADED LOCKING RING		37	46186202	CONICAL FILTER, INT	
11	---	HOCK CUP CWD		40	46201581	AST GASKET	
12	46200545**	FIRST STAGE VALVE BUTTON		41	46201737	AST GASKET NX	
13	46185205	HP PLUG 7/16", FIRST STAGE		ASSEMBLIES			
14	416812	AST DIN + GASKET		F	416400	FIRST STAGE 25X ASSEMBLY (DX - SX)	
15	46201285	SPRING DIAPHRAGM FIRST STAGE		---	46201741	SERVICE KIT FIRST STAGE 52X/25XR AST INT/DIN	
16	46110108	OR 108		NITROX VERSION			
17	46201120	REGULATING NUT, FIRST STAGE		N	46201743	NITROX CONNECTOR 200 BAR AST (EN13949)	
18	---	CWD DRY BODY, 52		NOTE			
19	46110101	OR 2012		Parts highlighted in red are included in the service kits 46201355			
20	46201284	SPRING, FIRST STAGE VALVE		**(12) TILL STOCK ENDS - IT WILL BE REPLACED BY 46202088			
21	46201275	HP CHAMBER 15					
22	46200582	PLATE SPRING BASE, FIRST STAGE					
23	46201102	BODY, DIN CONNECTOR 300 BAR					
24	46110247	OR 3043					
25	46110211	OR 2050					
26	46110107	OR 2031					

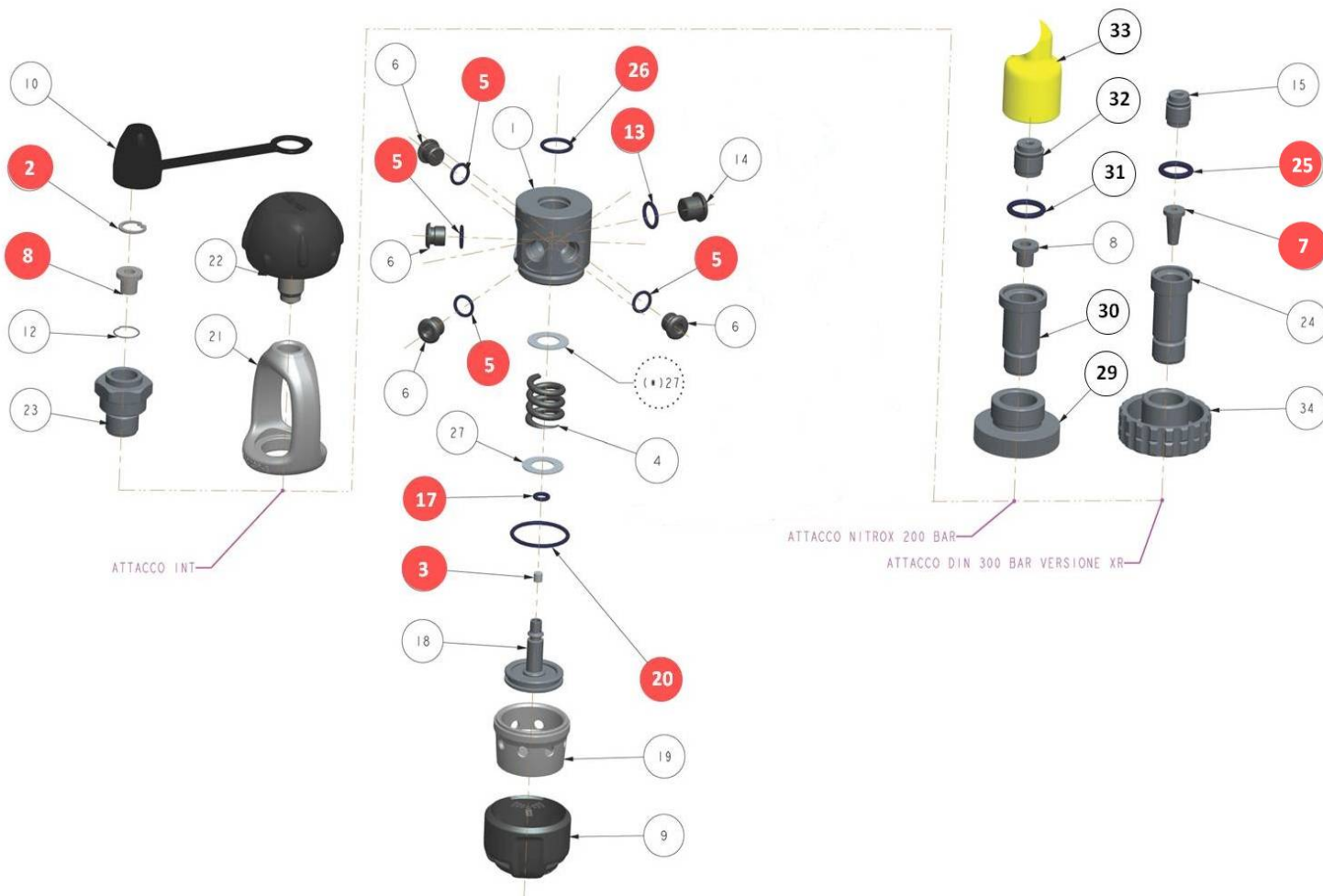


CHART NO : 44

FIRST STAGE R2S - XR

UPDATED: 10/01/2017

Rif.N.	CODE	DESCRIPTION
1	C	FIRST STAGE BODY
2	46185015	RETAINING RING, FIRST STAGE FILTER
3	46201247	PLASTIC SEAT, PISTON
4	46186220	SPRING POPPET FIRST STAGE
5	46110106	OR 106
6	46185204	LP PLUG 3/8", FIRST STAGE, REGS.
7	46200561	CONICAL FILTER, DIN
8	46186202	CONICAL FILTER, INT
9	46201098	COVER
9	46201500	COVER NX
10	46185010	DUST CAP, INT
11	46200546	DIN 300 BAR THREADED LOCKING RING
12	46185013	SPRING, FILTER 1ST
13	46110108	OR 108
14	46185205	HP PLUG 7/16", FIRST STAGE
15	46200547	O-RING SEAT DIN
17	46110203	OR 2018
18	46201095	PISTON FIRST STAGE
19	46201097	CAP FIRST STAGE
20	46110224	OR 2100
21	46201074	YOKE 2k9
22	46184079	YOKE KNOB
23	46201100	NUT, YOKE RETAINER FIRST STAGE R2S
24	46201102	BODY, DIN CONNECTOR 300 BAR

Rif.N.	Codice	DESCRIPTION
25	46110247	OR 3043
26	46110211	OR 2050
27	46186221	PLASTIC RING, SPRING BASE
28	46200562	PROTECTION CAP DIN
29	46200592	METAL THREADED LOCKING RING DIN NX 200 BAR
30	46201239	BODY DIN CONNECTOR 52 300 BAR
31	46110227	OR 3056
32	46200593	O-RING SEAT DIN NX
33	46200658	YELLOW DUST CAP, NITROX
34	46201030	METAL THREADED LOCKING RING DIN 25
ASSEMBLIES		
---	46201108	SERVICE KIT FIRST STAGE R2S INT/DIN
NITROX VERSION		
N	46201443	NITROX CONNECTOR 200 BAR (EN13949) - NBR ORINGS
---	46201444	SERVICE KIT NX 1ST 52/22 (EN13949) - NBR ORINGS
NOTE		
Parts highlighted in red are included in the service kits 46201108. As far as the first stages made before X series (2015) are concerned, you can get the codes of the Viton service kits, Nitrox connector (Viton) and Service kit NX (Viton) in the previous Spare Part catalogues (2015 and before) or in the "Accessories 1" section of the present Spare Part Catalogue		

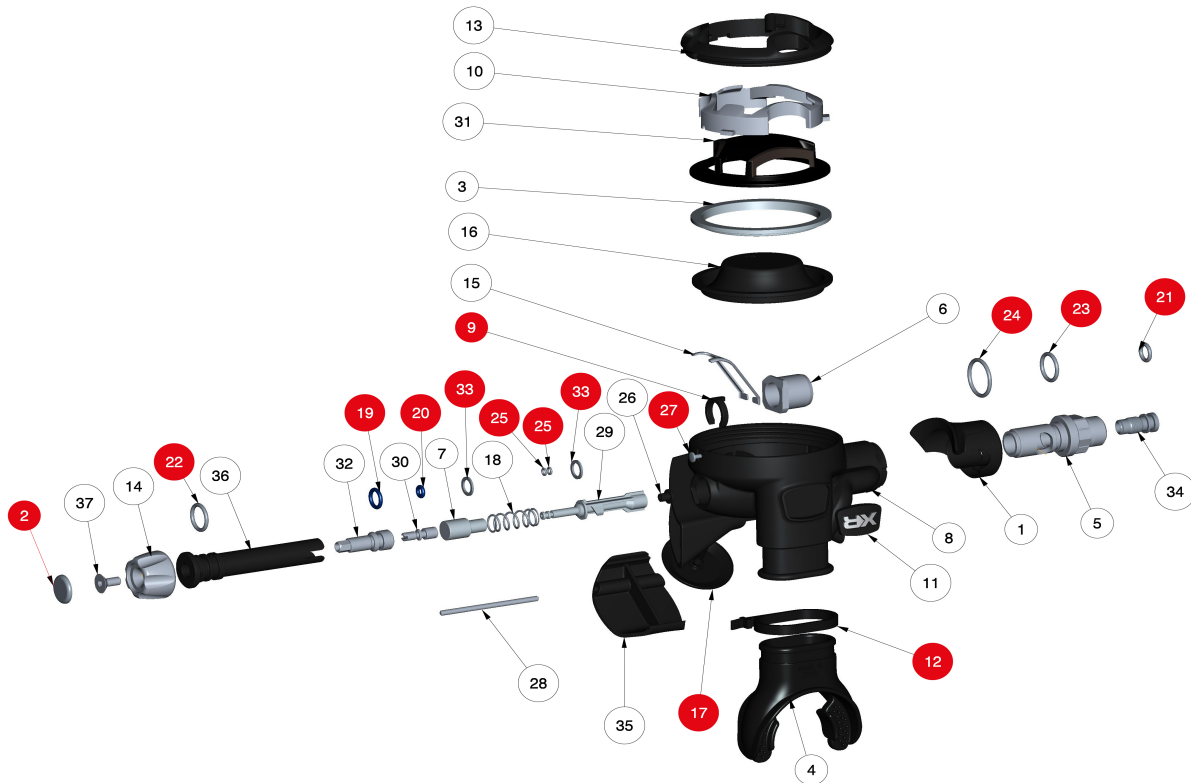
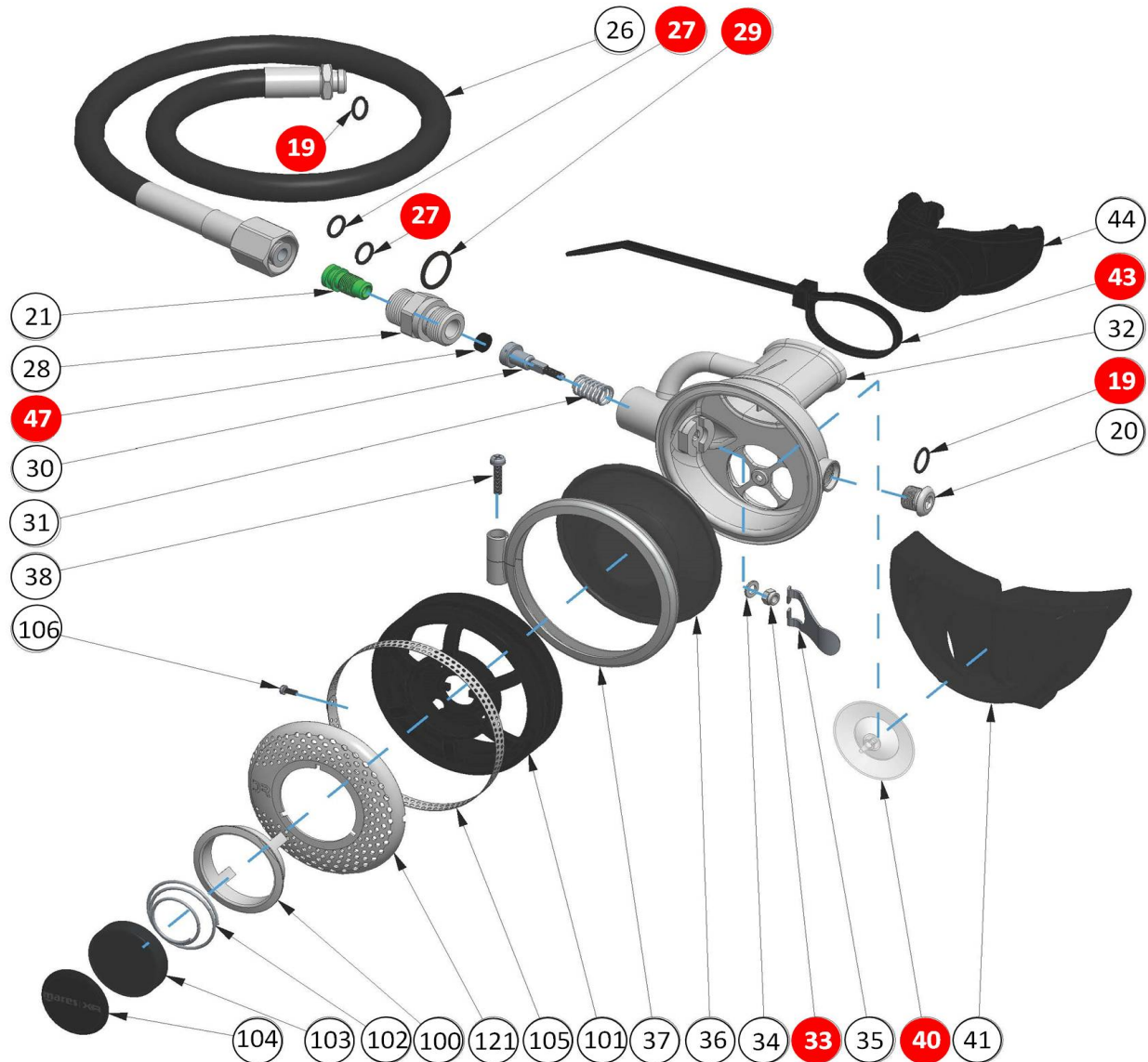


CHART NO : 137

SECOND STAGE HR

UPDATED: 11/05/2020

REF	CODE	DESCRIPTION	€	REF	CODE	DESCRIPTION	€
1	46201678	SIDE ADAPTER, DUAL ADJ		28	46200361	EXHAUST PLUG PIN	
2	46201607	KNOB LABEL		29	46201604	BALANCING PISTON	
3	46200773	DIAPHRAGM RING		30	46201559	PRE-SETTING SCREW	
4	E	MOUTHPIECE		31	46202024	SECOND STAGE BUTTON HR	
5	46201290	HOSE CONNECTOR		31	46202051	SECOND STAGE BUTTON HR NITROX	
6	46201627	BALANCING TUBE BUSHING		32	46201557	ADJUSTING SCREW	
7	46201560	LP BALANCING CHAMBER		33	46201648	WASHER BALANCED PISTON	
8	N/A	SECOND STAGE CASE		34	46200204	POPPET SEAT	
9	46201563	PLASTIC CLIP		35	46201636	INSPECTION PLUG	
10	46202025	SECOND STAGE BUTTON FRAME		36	46201555	BALANCING TUBE	
11	46202023	HR LABEL		37	46201612	KNOB SCREW	
12	47157984	CLAMP MOUTHPIECE		38	H	LP HOSE	
13	46201658	THREADED RING					
14	46202027	UPPER KNOB HR					
15	46201564	DEMAND LEVER					
16	46201364	DIAPHRAGM BLACK					
17	46201194	EXHAUST VALVE, SECOND STAGE					
18	46201561	BALANCING PISTON SPRING					
19	46110106	OR 106					
20	46110101	OR 212					
21	46110205	OR 2025					
22	46110110	OR 2037					
23	46110114	OR 114					
24	46110220	OR 2062					
25	46201606	OR 1.78 X 1.02					
26	46201605	RUBBER SEAT					
27	46184289	SAFETY PIN-COVER					
				ASSEMBLIES			
				---	46201729	SERVICE KIT SECOND STAGE E.U.D. ADJ	
				E	46200855	10 PACK BLACK MOUTHPIECES	
				NOTE			
				Parts highlighted in red are included in the service kits 46201729			



REF	CODE	DESCRIPTION	€	REF	CODE	DESCRIPTION	€
19	46110106	OR 106		44	---	MOUTHPIECE BK	
20	46185204	LP PLUG 3/8"		47	46184062	RUBBER SEAT SECOND STAGE	
21	46200204	POPPET SEAT		100	A	MESH GRID LOCK RING	
26	46201680	LP HOSE 3/8" RUBBER 60 cm WO/HOSE PROTECTOR		101	A	COVER	
26	46201682	LP HOSE 3/8" RUBBER 2100 cm WO/HOSE PROTECTOR		102	A	SPRING	
27	46110205	OR 2025		103	A	PURGE BUTTON	
28	46184282	HOSE CONNECTOR		104	46201451	STICKER D. 28 MARES XR	
29	46110211	OR 2050		105	A	METAL CLAMP	
30	46186024	POPPET BODY, SECOND STAGE		106	A	SCREW	
31	46201404	POPPET SPRING SECOND STAGE		121	A	GRID	
32	46201190	SECOND STAGE CASE					
33	46185051	LOCKNUT, DEMAND LEVER					
34	46185049	WASHER, DEMAND LEVER					
35	46201553	DEMAND LEVER					
36	46186029	DIAPHRAGM, SECOND STAGE					
37	46201542	RING CLAMP, SECOND STAGE					
38	46185075	CLAMP SCREW, II STAGE					
40	46184006	EXHAUST VALVE, SECOND STAGE					
41	46186310	EXHAUST TEE					
43	47157984	CLAMP					
ASSEMBLIES							
A	46184279	COVER ASSEMBL. SECOND STAGE DR					
---	46186160	SERVICE KIT SECOND STAGE ABYSS/DR					
	46200855	10 PACK BLACK MOUTHPIECES					
NOTE							
Parts highlighted in red are included in the service kits 46186160							

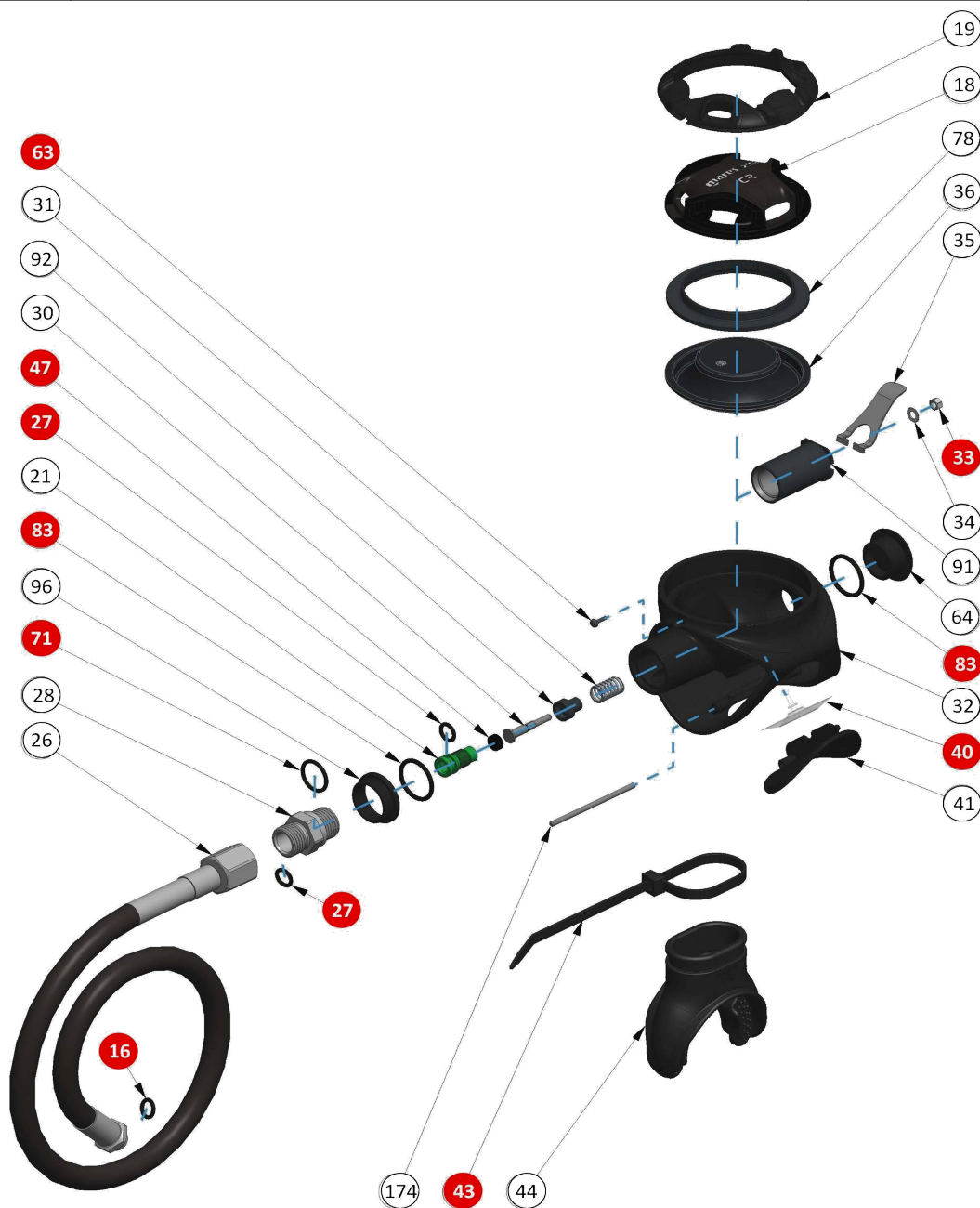


CHART NO : XRS2

SECOND STAGE CR

UPDATE : 21/12/2018

REF	CODE	DESCRIPTION	€
16	46110106	OR 106	
18	46201453	SECOND STAGE BUTTON	
19	46201455	THREADED RING	
21	46200204	POPPET SEAT	
26	46201680	LP HOSE 3/8" RUBBER 60 cm W0/HOSE PROTECTOR	
26	46201682	LP HOSE 3/8" RUBBER 210 cm W0/HOSE PROTECTOR	
27	46110205	OR 2025	
28	46184282	HOSE CONNECTOR	
30	46184219	POPPET METAL BODY REGS	
31	46201404	POPPET SPRING	
32	46200858	SECOND STAGE CASE	
33	46185051	LOCKNUT, DEMAND LEVER	
34	46185049	WASHER, DEMAND LEVER	
35	46200778	DEMAND LEVER	
36	46201364	DIAPHRAGM BLACK	
40	46184006	EXHAUST VALVE, SECOND STAGE	
41	46200769	INSPECTION PLUG	
43	47157984	CLAMP	

REF	CODE	DESCRIPTION	€
44	---	MOUTHPIECE BK	
47	46184062	RUBBER SEAT SECOND STAGE	
63	46184289	PIN-COVER	
64	46200772	SECOND STAGE ADJUSTMENT PLUG	
71	46110211	OR 2050	
78	46201456	DIAPHRAGM RETAINING RING	
83	46110225	OR 2068	
91	46200992	DEMAND LEVER INSERT	
92	46184221	VALVE BODY, SECOND STAGE	
96	46200779	BY-PASS RETAINER RING	
174	46200361	EXHAUST PLUG PIN	
ASSEMBLIES			
---	46200296	SERVICE KIT ROVER/PRESTIGE/CARBON/CR	
---	46200855	10 PACK BLACK MOUTHPIECES	
NOTE			
Parts highlighted in red are included in the service kits 46200296			

DRAWING NO : E1147

SECOND STAGE VR - VR NX

UPDATE : 02/08/2016

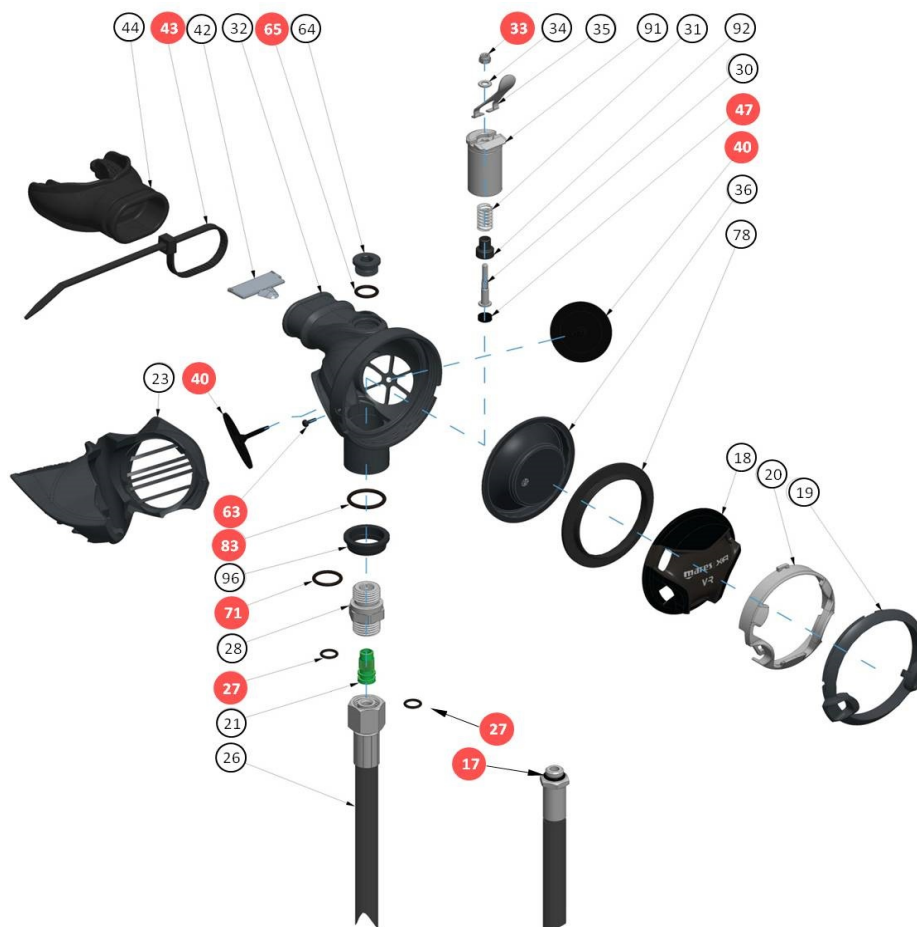


CHART NO : XRS3

SECOND STAGE VR - VR NX

UPDATE : 21/12/2018

REF	CODE	DESCRIPTION	€	REF	CODE	DESCRIPTION	€
17	46110106	OR 106		47	46184062	RUBBER SEAT SECOND STAGE	
18	46201465	SECOND STAGE BUTTON BK		63	46184289	PIN-COVER	
18	46201467	SECOND STAGE BUTTON NX		64	46201460	INSPECTION PLUG	
19	46201462	THREADED RING		65	46110110	OR2037	
20	46201464	SECOND STAGE BUTTON FRAME		71	46110211	OR 2050	
21	46200204	POPPET SEAT		78	46201456	DIAPHRAGM RING	
23	46201461	EXHAUST VALVE, SECOND STAGE		83	46110225	OR 2068	
26	46201681	LP HOSE 3/8" RUBBER BK 110 cm WO/HOSE PROTECTOR		91	46201469	DEMAND LEVER INSERT	
27	46110205	OR 2025		92	46184221	VALVE BODY, SECOND STAGE	
28	46184282	HOSE CONNECTOR		96	46200779	SPACER RING BY-PASS BK	
30	46184219	POPPET METAL BODY REGS		ASSEMBLIES			
31	46201404	SPRING SECOND STAGE		---			
32	46201459	SECOND STAGE CASE		---	46185049	LOCKNUT, DEMAND LEVER (10 PCS)	
33	46185051	LOCKNUT, DEMAND LEVER		---	46200855	MOUTHPIECE BK (10 PCS)	
34	46185049	WASHER, DEMAND LEVER		---	46201498	SERVICE KIT LOOP/VR	
35	46200778	DEMAND LEVER PRESTIGE		NOTE			
36	46201364	DIAPHRAGM PRESTIGE BLACK		Parts highlighted in red are included in the service kits 46201498			
40	46201194	EXHAUST VALVE, SECOND STAGE					
42	46201470	VR DEFLECTOR					
43	47157984	CLAMP					
44	46200366	MOUTHPIECE BK					